



RECP #: 752842

RECORDED 5/8/2019 AT 1:20 PM BK# 2620 PG# 1884  
Debra K. Lee, CLERK OF LARAMIE COUNTY, WY PAGE 1 OF 1

# STATE OF WYOMING CORNER RECORD

(In compliance with the CORNER PERPETUATION AND FILING ACT, Wyoming Statutes, 1997 Section 33-29-140, et. seq., and the Rules and Regulations of the Board of Registrations for Professional Engineers and Professional Land Surveyors)

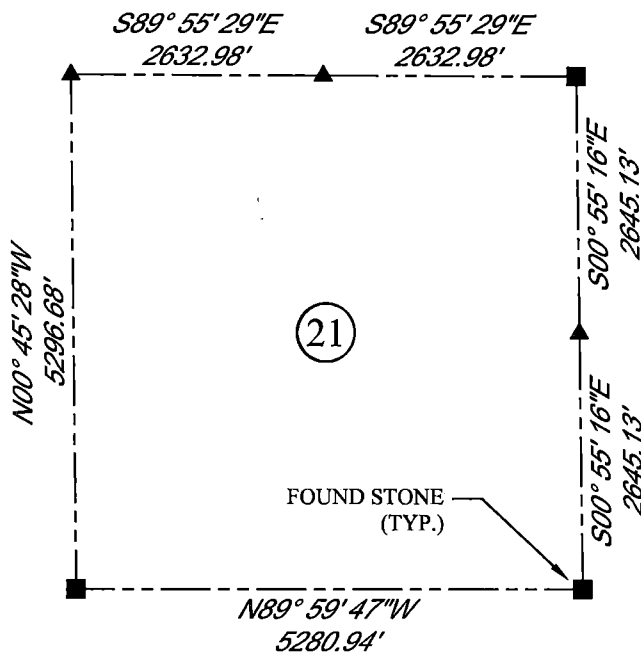
## SOUTHEAST CORNER SECTION 21, T. 18 N., R. 63 W., 6TH P.M., LARAMIE COUNTY, WYOMING

**GLO:** SET A SANDSTONE 16X12X4, 10 IN. DEEP MARKED WITH 2 NOTCHES ON S. SIDE AND 3 NOTCHES ON E. SIDE FOR CORNER TO SECTIONS 21, 22, 27, AND 28.

**FOUND:** SET SANDSTONE. 12X9X8. NO VISIBLE MARKINGS. APPROXIMATELY 18FT SOUTH OF FENCE CORNER.



SCALE: 1" = 2000'  
NORTH DETERMINED BY  
G.P.S OBSERVATIONS



### LEGEND:

- FOUND BLM CAP
- FOUND USFS CAP
- FOUND STONE
- FOUND PRIVATE MONUMENT
- ◆ CALCULATED POSITION
- ▲ SET MONUMENT (LS10245)
- SECTION LINE

DATE OF FIELD WORK: 08/10/2018 OFFICE REFERENCE: 746049

### CROSS INDEX DIAGRAM

	1	2	3	4	5	6	7	8	9	10	11	12	13	14	15	16	17	18	19	20	21	22	23	24	25
A																									
B																									
C		6		5		4		3		2		1													
D																									
E																									
F																									
G		7		8		9		10		11		12													
H																									
J																									
K																									
L		18		17		16		15		14		13													
M																									
N																									
O																									
P		19		20		21		22		23		24													
Q																									
R																									
S																									
T		30		29		28		27		26		25													
U																									
V																									
W																									
X		31		32		33		34		35		36													
Y																									
Z																									

WOOD  
2615 AVIATION DRIVE  
SHERIDAN, WY 82801  
PH: 307-675-6400

# wood.

THIS CORNER RECORD WAS  
PREPARED BY ME OR UNDER  
MY DIRECTION AND  
SUPERVISION,  
SEAL AND SIGNATURE

